

Thailand Construction Industry



Construction Institute of Thailand



Construction Institute of Thailand

Founded on 1st Mar 2011 according to the resolution of Thai cabinet as a networking institute of the ministry of industry for being as a core organization to coordinate between public and private sector, driving sustainable development in construction industry of Thailand and making justice and equality to all involved stakeholders.

Current Operation

1

Development/Publicize of construction industry database.

2

Development of standard system for construction (Standard of construction enterprises/Standard of construction personnel/Standard of construction materials).

3

Solving of personnel shortage problem in construction.

4

Improving of procurement/hire and the estimated construction cost regulations.

Etc.



Contact Information



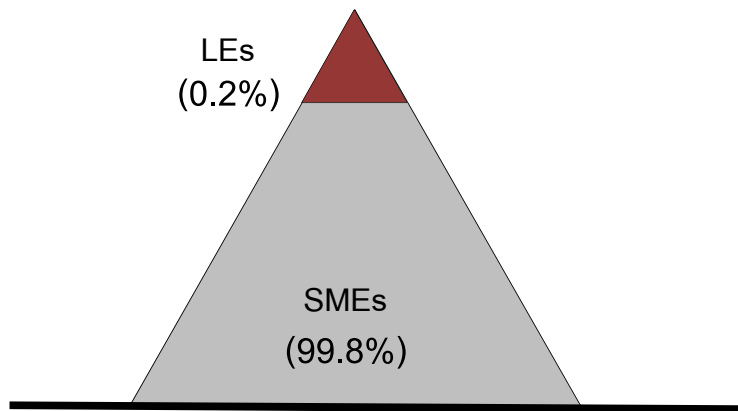
1055/929 R C K Tower
38th Floor, Silom Rd.
Bangrak, Bangkok, Thailand 10500

Tel. 66-2236-5655

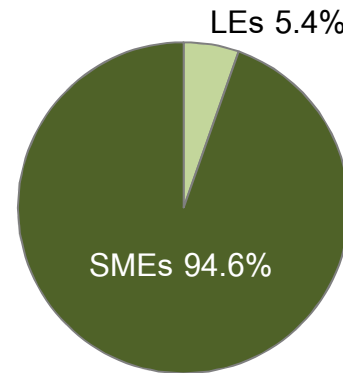
Fax. 66-2236-5654

Website: www.cit.or.th

Structure of Construction Industry



Amount of Business
Registration
> 80,000 titles



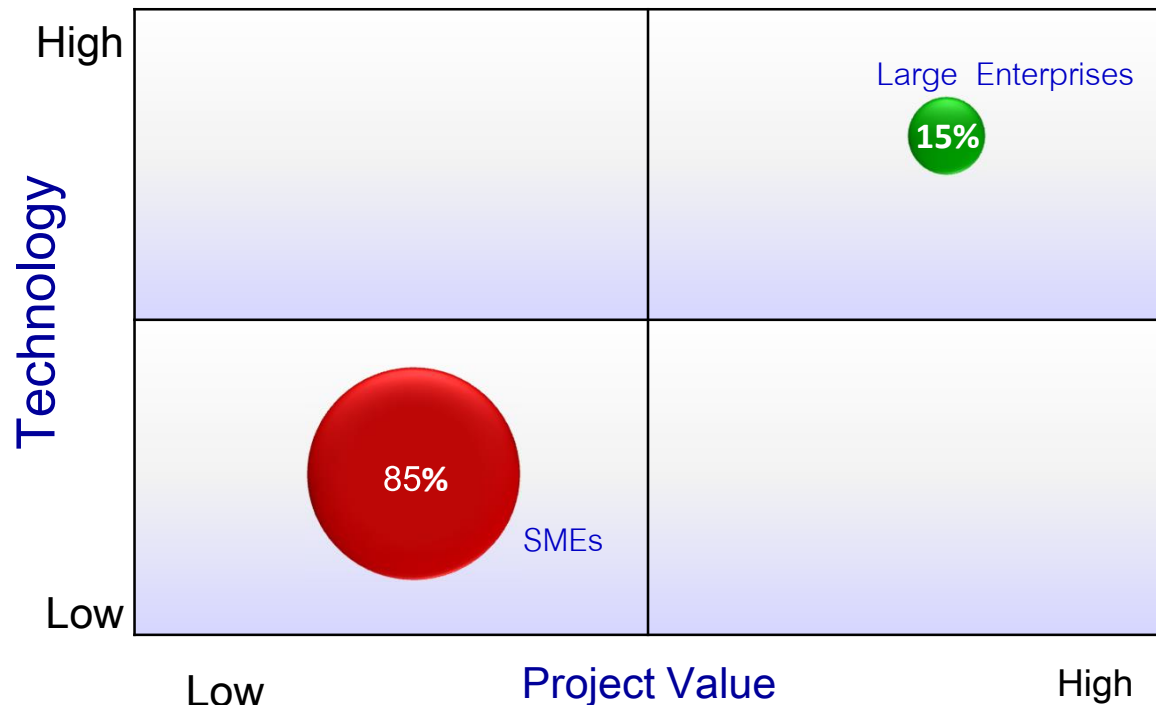
Total Employment
in 2014
2.26 million people

Note: LE = workers number > 200 people
SME = workers number < 200 people

- SMEs play a crucial role in supply chain of construction sector.
- Investment value in construction sector is more than 1 trillion baht.
- The combination of SMEs directly and subcontractor of large enterprises is total 85%.

Proportion of Current spending for Domestic Construction is
Large Enterprises 15% and SMEs 85%

Competitive Position of Constructors for Domestic Construction



- **Hi-end** : Large enterprises use medium-high technology in construction for high investment value projects.
- **Low-end** : SMEs in construction business (subcontractor) use standard-medium technology in construction for low investment value projects or subcontracted projects.

Source: Thai Contractors Association Under H.M.

Investment Value of Construction Sector (at current market price)

2015 Second Quarter

unit: million baht

	2012	2013					2014					2015	
		Q1	Q2	Q3	Q4	total	Q1	Q2	Q3	Q4	total	Q1	Q2
Construction	1,032,418	275,982	267,474	256,149	254,374	1,053,979	252,042	263,638	255,716	265,668	1,037,064	294,594	288,733
Construction (YoY)	12.6	16.07	7.05	- 3.98	- 8.46	2.1	- 8.67	- 1.43	- 0.17	4.44	- 1.6	16.88	9.52
Private	523,772	141,155	141,773	141,085	135,670	559,683	134,189	136,420	137,701	139,272	547,582	133,225	135,167
Private (YoY)	11.5	14.07	8.9	5.82	- 0.61	6.86	- 4.94	- 3.78	- 2.4	2.65	- 2.16	- 0.72	- 2.95
Public	509,020	135,446	125,227	115,986	118,502	495,161	118,300	127,034	117,639	127,050	490,023	163,599	152,627
Public (YoY)	14.1	18.66	5.18	- 13.07	- 16.77	- 2.72	- 12.66	1.44	1.43	7.21	- 1.04	38.29	20.15

source : Office of the National Economic and Social Development Board

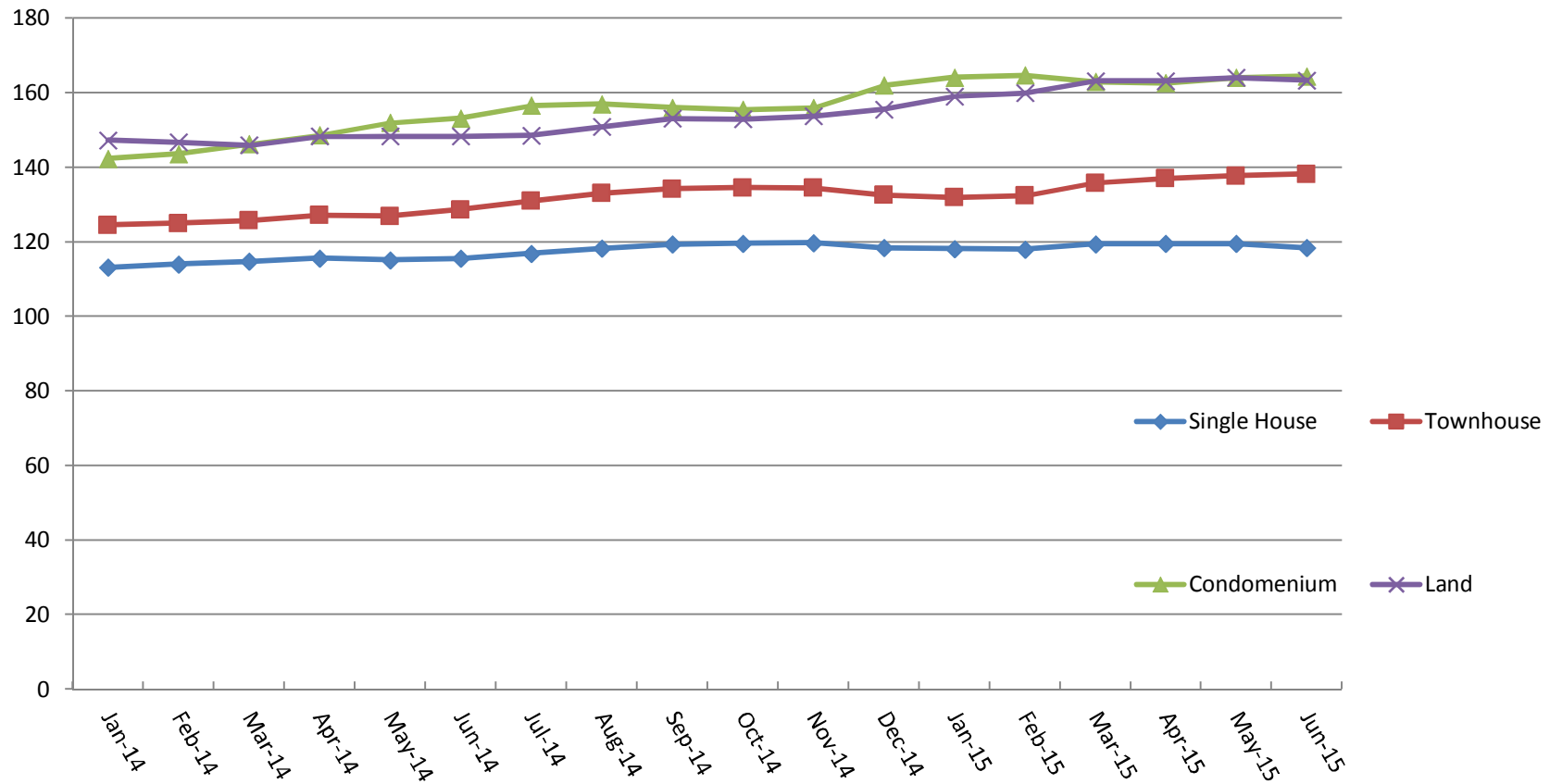
Worker Numbers 2014-2015

2014	amount
January	2.18
February	2.41
March	2.65
April	2.62
May	2.28
June	2.22
July	2.12
August	2.0
September	2.2
October	2.15
November	2.08
December	2.18

2015	amount
January	2.28
February	2.56
March	2.52
April	2.56
May	2.47
June	2.32
July	2.29

source : National Statistical Office of Thailand

Price Index



source : Bank of Thailand

Thank you



Construction Instruction of Thailand